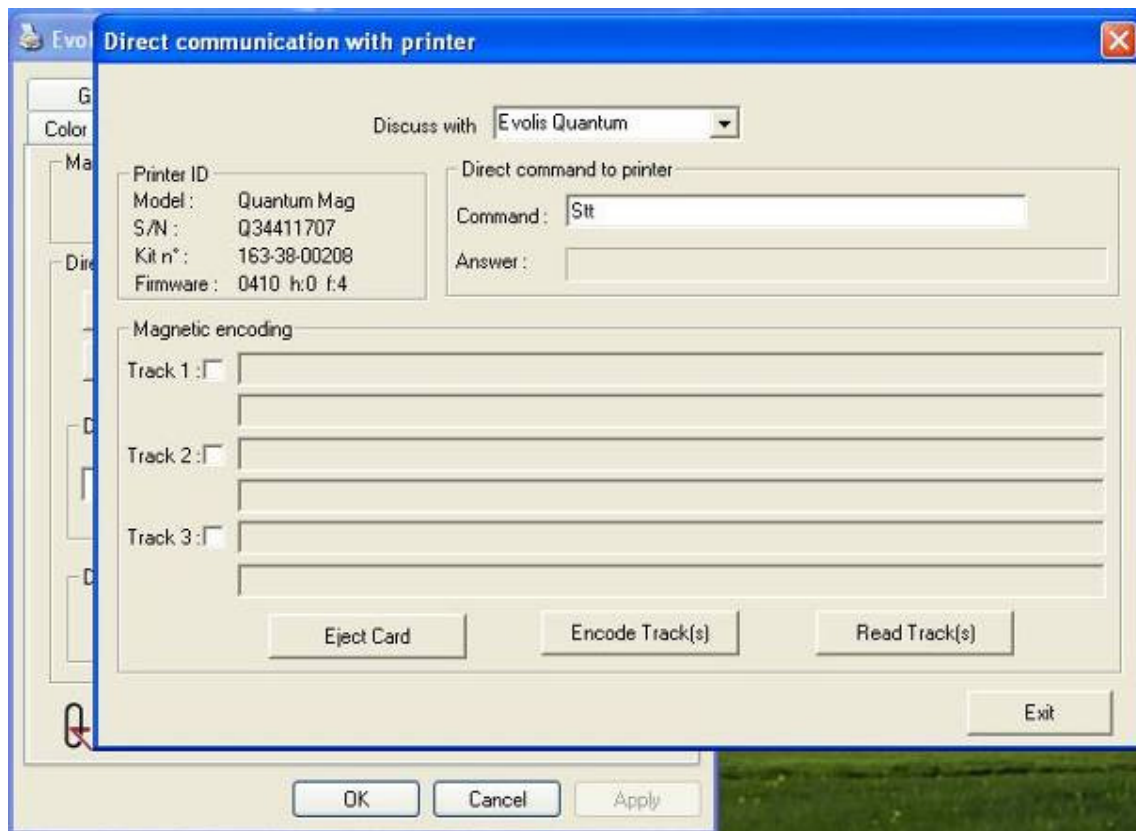


STEP1 – Print a technical test card from the previous head.

Before making any parameter change, print a technical test card to know the default settings. To print this card, make sure that you have inserted some cards and a ribbon inside the printer. Then open the driver properties, **Tools** section and **Dialog with printer**. Tap Stt and press the enter key. The printer will automatically print a technical test card.



STEP 2– Remove the right margin.



To reduce the right margin (end of printing) uses the command Pnl. You must increase the number of printed lines in order to reduce this margin.

In that case, for example send the command Pnl;+;4 If there is still a margin, send it again. Be careful, if the number of printed line is too important, the ribbon will cut.

Pnl;p1;p2 (Parameter number line) ***Sets the Number of lines to be printed***

p1: + Increases the current value

- Decreases the current value

= Sets the value

p2: Value to add, to deduct or to set

STEP 3– Remove the left margin.



To reduce the left margin (beginning of printing) uses the command Px. You must decrease the value of the X offset in order to reduce this margin.

In that case, for example send the command Px;-2 If there is still a margin, send it again. Be careful, if the offset setting is too short, the ribbon will cut.

Px;p1;p2 (Parameter X offset)

Sets the X Offset Value

p1: + Increases the current value

- Decreases the current value

= Set the value

p2: Value to add, to subtract or to set

STEP 4– Remove the top margin



To reduce the top margin uses the command Py. You must decrease the value of the Y offset in order to reduce this margin.

In that case, for example send the command Py;-;2 If there is still a margin, send it again. Be careful, if the offset setting is too short, you will get some wrinkles on the printing.

Py;p1;p2 (Parameter Y offset)

Sets the Y Offset Value

p1: + Increases the current offset value

- Decreases the current offset value

= Sets the value

p2: Value to add, to subtract or to set

STEP 5– Remove the bottom margin



To reduce the bottom margin uses the command Pnw. You must increase the number of printed lines in order to reduce this margin.

In that case, for example send the command Pnw;638 If there is still a margin, increase again the value.

Be careful, if the number of printed line is too important, you will get some wrinkles on the printing.

Pnw;val (Parameter number write)

Sets the Number of lines to be printed in Y orientation.

Example: (ESC)Pnw;val(CR)

Summary

