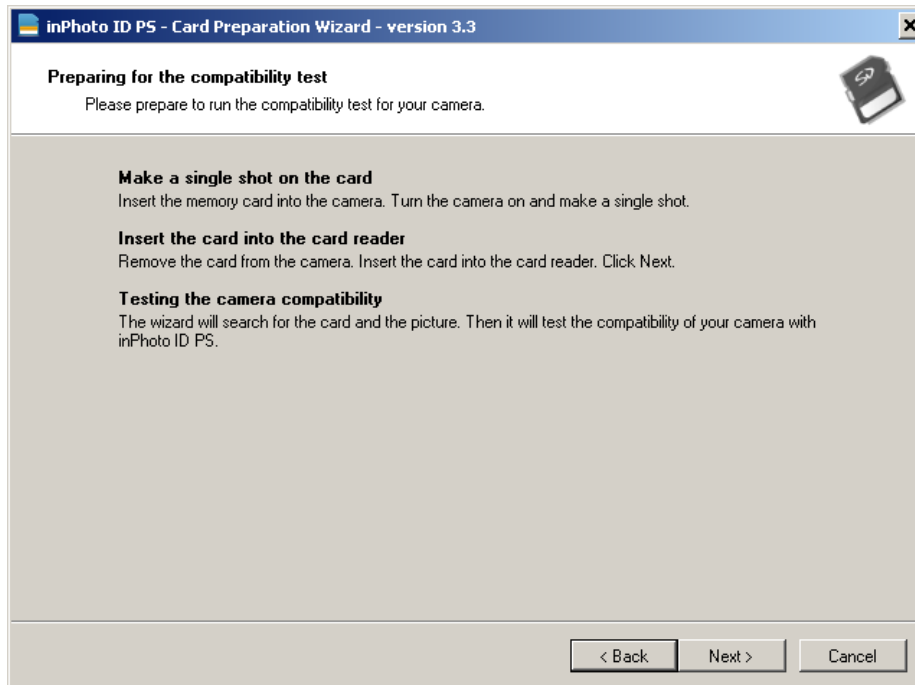
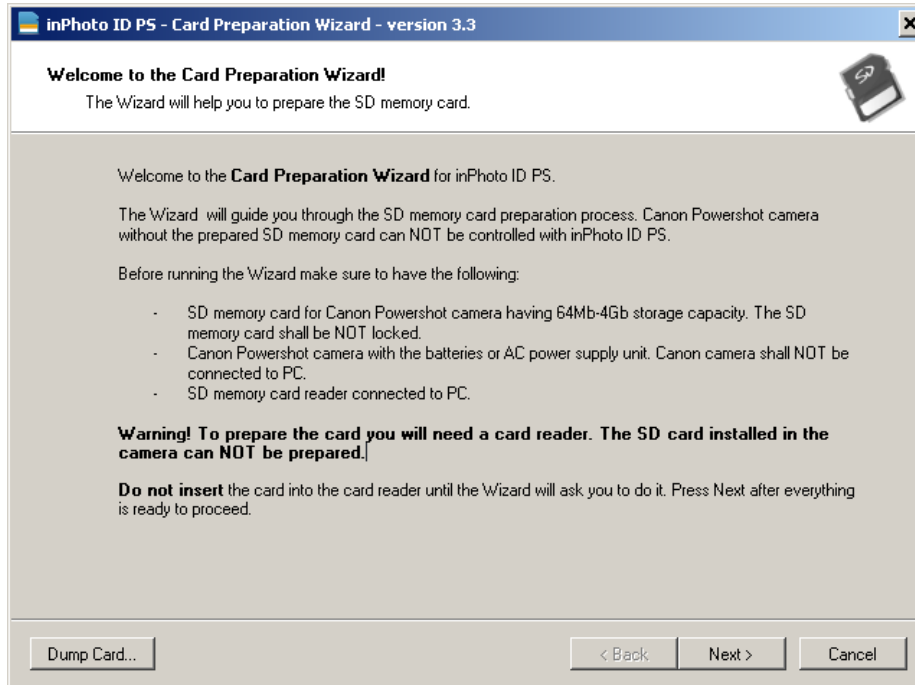
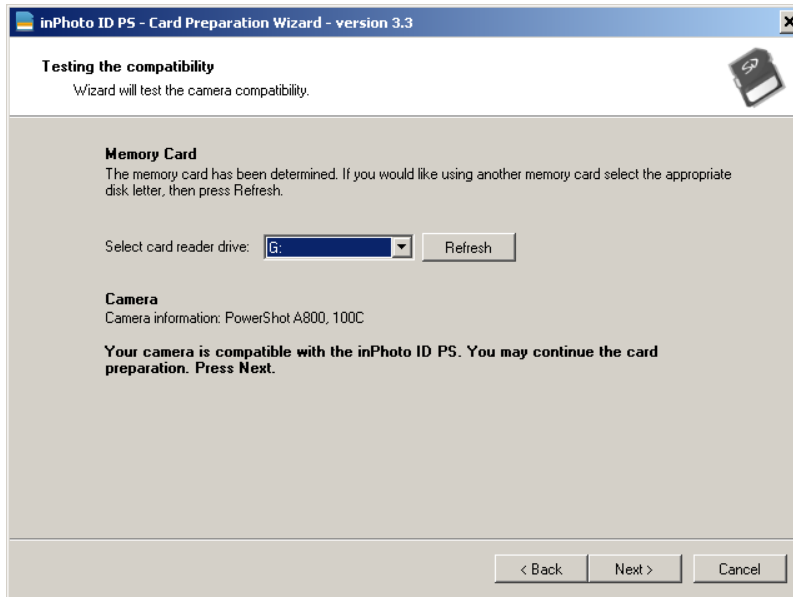
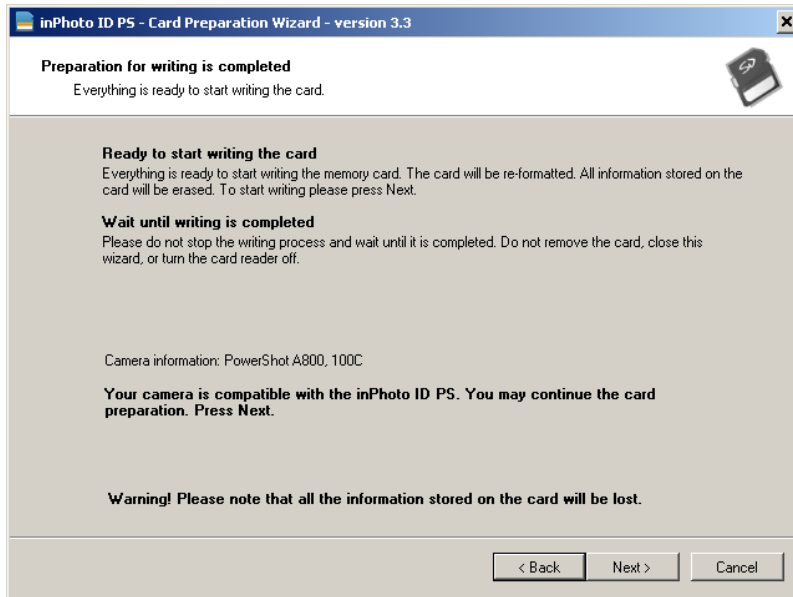


## Reprogramming the Memory card





**Writing is finished successfully**

Please set the read-only mode on memory card.

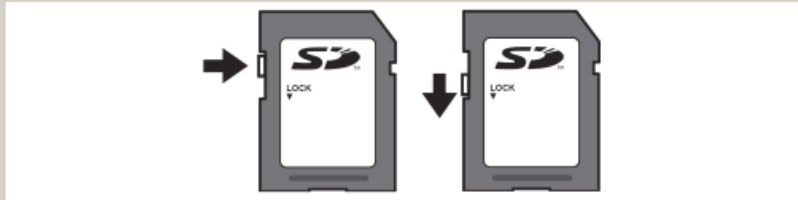


**Writing is completed**

The card writing was finished successfully. Please continue the card preparation.

**Set the read-only mode on memory card**

Now it is required to turn the card into read-only mode for automatic start of the program on camera. Remove the card from the reader and set the switch into read-only position (lock). Press Next.



**Warning! If the read-only mode is turned off, the program will not run automatically and the camera control from computer will be impossible.**

< Back    Next >    Cancel

**Work completion**

The card preparation is completed.



The Wizard steps are completed. You may start preparing another card or close the Wizard.

< Back    Next >    Done